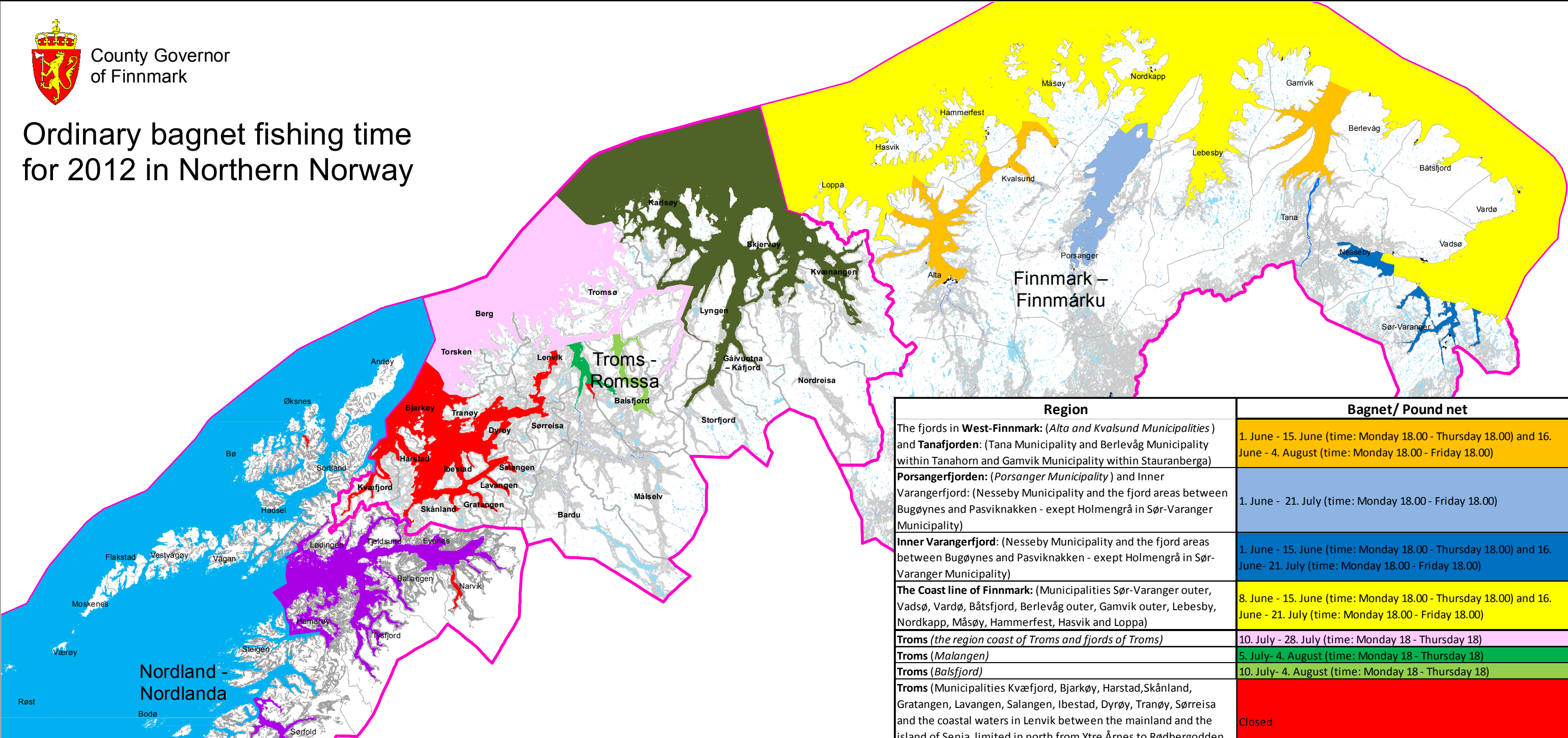


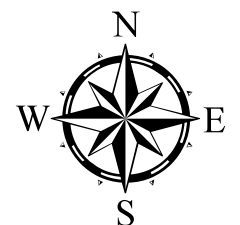


County Governor
of Finnmark

Ordinary bagnet fishing time for 2012 in Northern Norway



Region	Bagnet/ Pound net
The fjords in West-Finmark : (<i>Alta and Kvalsund Municipalities</i>) and Tanafjorden : (<i>Tana Municipality and Berlevåg Municipality within Tanahorn and Gamvik Municipality within Stauranberga</i>)	1. June - 15. June (time: Monday 18.00 - Thursday 18.00) and 16. June - 4. August (time: Monday 18.00 - Friday 18.00)
Porsangerfjorden : (<i>Porsanger Municipality</i>) and Inner Varangerfjord: (<i>Nesseby Municipality and the fjord areas between Bugøynes and Pasviknakken - exept Holmengrå in Sør-Varanger Municipality</i>)	1. June - 21. July (time: Monday 18.00 - Friday 18.00)
Inner Varangerfjord : (<i>Nesseby Municipality and the fjord areas between Bugøynes and Pasviknakken - exept Holmengrå in Sør-Varanger Municipality</i>)	1. June - 15. June (time: Monday 18.00 - Thursday 18.00) and 16. June - 21. July (time: Monday 18.00 - Friday 18.00)
The Coast line of Finnmark : (<i>Municipalities Sør-Varanger outer, Vadsø, Vardø, Båtsfjord, Berlevåg outer, Gamvik outer, Lebesby, Nordkapp, Måsøy, Hammerfest, Hasvik and Loppa</i>)	8. June - 15. June (time: Monday 18.00 - Thursday 18.00) and 16. June - 21. July (time: Monday 18.00 - Friday 18.00)
Troms (<i>the region coast of Troms and fjords of Troms</i>)	10. July - 28. July (time: Monday 18 - Thursday 18)
Troms (<i>Malangen</i>)	5. July - 4. August (time: Monday 18 - Thursday 18)
Troms (<i>Balsfjord</i>)	10. July - 4. August (time: Monday 18 - Thursday 18)
Troms (<i>Municipalities Kvæfjord, Bjarkøy, Harstad, Skånland, Gratangen, Lavangen, Salangen, Ibestad, Dyrøy, Tranøy, Sørreisa and the coastal waters in Lenvik between the mainland and the island of Senja limited in north from Ytre Årnes to Rødbergodden, and Aursfjorden within a line from Eidebukta to Aursnes</i>)	Closed
Nord-Troms (<i>Municipalities Kåfjord, Skervøy, Nordreisa, Kvænangen, Karlsøy, Lyngen og Storfjord</i>)	5. July- 31. July (time: Monday 18 - Thursday 18)
Nordland (<i>The regions Inner Helgeland, and Ofoten and Inner Salten: Municipalities Lødingen, Tjeldsund, Evenes, Narvik, Ballangen, Tysfjord, Hamarøy, Sørfold, Beiarn, Gildeskål (inside of Sandhornøya), Rana, Hemnes, Leirfjord, Vefsn, Alstahaug (east of the coastal highway), Vevelstad (east of the coastal highway).</i>)	15. July- 4. August (time: Monday 18 - Wednesday 18)
Nordland (<i>The regions of Lofoten and Vesterålen, and the coastline of Nordland south of the Vestfjord: Municipalities of Andøy, Øksnes, Sortland, Bø, Hadsel, Vågan, Vestvågøy, Flakstad, Moskenes, Værøy, Røst, Steigen, Bodø (except Skjerstadvfjorden), Gildeskål (except inside of Sandhornøya), Meløy, Rødøy, Lurøy, Træna, Nesna, Dønna, Leirfjord (outside bridge of Helgeland and bridge of Sundøy), Herøy, Alstahaug (west of the coastla highway), Vega, Vevelstad (west of the coastal highway), Brønnøy (west of the coastal highway), Sømna (west of the coastal highway), Bindal (west of the coastal highway).</i>)	15. July- 29. July (time: Monday 18 - Wednesday 18)
Nordland (<i>Skjomenfjorden in Narvik inside of the E6-bridge</i>) and (<i>Steinslandsfjorden in Øksnes inside of a drawn line between Hundsholmen and Ystvika</i>).	Closed



1:2 000 000

Source: GEOVEKST
Implementation: The Office of the County Governor of Finnmark